

Wilco Solutions



*F*ounded in 2010 and Head Quartered in Hyderabad, INDIA Wilco Solutions offers Variety of IT Software solutions as well as we have feature rich product WHIM which is into Health Domain that Provide end to end automated managerial tasks carried out by all levels of work force in a hospital. we are goal - driven and value oriented organization with strong ethics, integrity and excellent culture of learning.

Our Management team has incomparable technical skilled individuals with exceptional expertise in all phases of software Development Life Cycle.

Our Mission is to improve customer's business with our efficient, timely, prompt and expertise work. Our focus is on high quality IT Solutions and services.

“ As a provider for IT services our focus is on increasing the profitability of our customer's stake holders and we strive to add value to their business objectives. ”

Wilco Health Information Manager

PATIENT MANAGEMENT

Deals with Patient Registration, OP management as well as IP management.

BILLING

Manages all billing activity for the entire billing points like pharmacy, diagnosis, IP discharge etc.

PHARMACY

It contains supply chain management of pharmacy items by focusing on purchases, sales and adjustments.

CENTRAL STORES

Controls the inventory goods needed for hospital. This module focuses on purchases and bill payments.

OT

Controls the schedules of in patient operations.

ER

Manages the casualty patients and their billing.

ACCOUNTING

Controls the expense voucher punching category wise with overview report supporting

HR

Manages the hospital staff details along with their attendance and salary processing.

MIS

Plenty of managerial summary reports for entire modules. It helps in making managerial decisions.

LIS

Manages OP and IP tests along with billing. Storing and retrieval of test reports being managed

MR

Medical Records with above 15 blocks of information is stored and made retrieval for in patients

DOCTORS

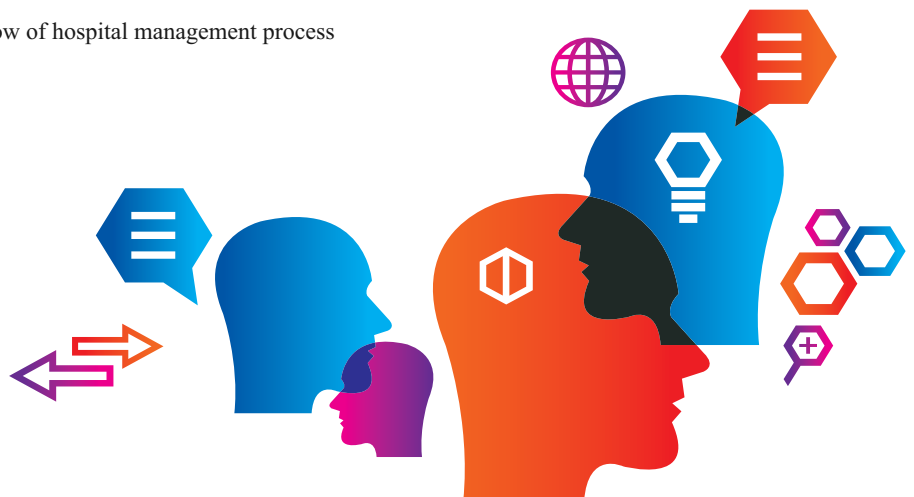
Doctors can manage patients treatment data and medication history.

USER ADMIN

Purely deals with authentication of hospital staff to their relevant modules

DATA MANAGEMENT

Initial data management which will be useful in workflow of hospital management process is being managed.



We continuously strive to archive our mile stones with the assistance of our trained and expert resources keeping the budget limitation in line with costumer feasibility.

Advance Innovation while controlling costs



Can your company keep up? The true cost of innovation and its effect on your bottom line



Our Mission is to improve customer's business with our efficient, timely, prompt and expertise work

Our focus is on high quality IT solutions and services. Our endeavor is to make our customers satisfy with our services and we strive to add value to their business objectives.

We ensure strong relationship with clients by following proven operational methodologies and maintaining organization stability.

Why Wilco Solutions ?

- ✦ Focused on customer profitability.
- ✦ Truly believe in customer satisfaction.
- ✦ Quality driven solutions.
- ✦ 100% Ownership and Responsible.
- ✦ Skilled and Trained Resource.
- ✦ Highly reasonable issue fix time.
- ✦ Highly Cost effective.
- ✦ High reliability.

WTECH UPDATE

MARKET UPDATE

We keep ourselves engaged in continuous observation and analysis of our developing domain and its market update in terms of competitive players. We achieve this by means of direct interaction and conducting/participating in the relevant seminars.

TECHNOLOGY UPDATE

As an endeavor to make our customer satisfy with our highly reliable and more user friendly user interfaces, with the help of our expert technical team, we do spend a lot of valuable time to refresh ourselves with latest methodologies and up gradable technologies. We are currently focusing on smart phone and hand held device programming so as to integrate the same in to the existing products.



DOMAIN UPDATE

We always look forward to have varied products in the current fascinating domains which will yield us enormous scope to not only reserve ourselves to be a part of the tough competitors but also to increase remarkably volume of our customer base.

TAKE IT TO THE CLOUD

It's been an immense encouraging to work on cloud environment to setup the current developing products on the same. Deploying the applications on cloud will be a hassle free with high reliability and high availability. Eagerly looking forward to have all our developing products take it them to the CLOUD.

Wilco Solutions provide



Application development.

We provide development of business functionality from small range like system automation to enterprise level requirement. We have worked in various domains such as publication, Telecom, System automation, e-Commerce, Micro finance. We have exceptional resources to implement web modules, Stand Alone applications, customized application development on legacy Systems. We have hands on experience on portal development applications and business process implementation using Web logic integration technology.

We offer full life cycle Application Development services starting from requirements assurance to application design, application development and pilot run and from application building and testing to implementation/roll-out and support. We consider the following aspects while application development.

- Application performance
- Risk management
- Flexibility
- Reusability
- Low maintenance cost
- Customer budget benefits
- Low Defect Ratio

Application support services.

We do support existing application within customers reasonable budget. it may include enhancement of existing modules

Quality Analysis.

We have expert testing resources in performing both and automated testing. We follow strong integrity and high secured standards while implementing the testing we provide manual and automated testing services to Independent software Vendors(ISVs) and to companies Outsourcing Development. We help our customers to Unearth critical software defects at early stage using a domain focused methodology attain better productivity from test automation and staff argumentation

Coming update

- ⌘ Integration of third party accounting package to WHIM accounts module.
- ⌘ Plugin for smart phone UI to WHIM.
- ⌘ Cloud environment.
- ⌘ supply chain management with WTIM (Trading domain).
- ⌘ Support for open database system.
- ⌘ Application service provider.
- ⌘ Will commence overseas sales operations.



Sales Center : # 29-37-61, 1st Floor,
Near vijetha hospital,
Eluru Road,VJAYAWADA - 2
Ph : 0866-6666681,
Cell : 9394508111.